



Office Space Available | Prime Downtown Location

15 Court Square

This well-located property is sited in a historical section of Boston formerly known as Scollay Square. A short walk from Boston City Hall, this 11-story building is well-suited for small businesses and professional practices.

It's situated in a desirable, highly-accessible section of downtown Boston close to major highways, multiple parking options, all public transportation centers, shopping, restaurants, local tourist attractions, as well as everyday conveniences such as dry cleaning, convenience stores and office supply stores.

We have several suites available at an aggressive gross rent. Square footage ranges from 1,074 — 2,722 SF.

Available Space

- Suite 110 – 1,074 SF
- Suite 660 – 1,650 SF
- Suite 800 – 1,608 SF
- Suite 1000 – 2,722 SF



For leasing information, contact:

Property Features

- Easy access to all public transportation
- Covered parking garage access
- Spaces may be sub-divided
- 24-hour building access
- 24 hr Maintenance 24/7
- A/C control
- Cleaning Services
- Lobby Attendant

Rick Bouzan

rbouzan@brickpoint.com

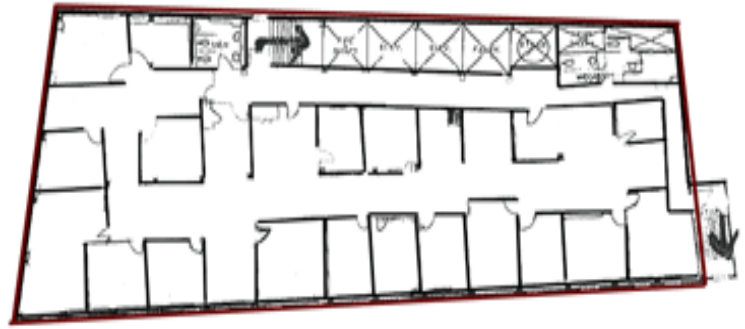
617-248-0072 direct

617-908-1569 cell

brickpoint.com/commercial

Specifications

Property Type:	Commercial
Premises Sq Ft:	Approx. 80,000
Year Built:	Early 1900's
Building:	Brick & Mortar
Frontage:	62 ft.
Depth:	179 ft.
Zoning:	Office
Roof:	Tar & Gravel
Floors:	11 Stories
Power:	Electric
HVAC:	Heat Pumps/Forced Hot
Utilities:	Water Metered Separately



TYPICAL FLOORPLAN
For more floorplans, visit our website at
brickpoint.com/commercial



SAMPLE INTERIOR

For more interior view, visit our website at www.brickpoint.com/commercial

